

**ASSEMBLY AND USE MANUAL**

**CUSTERS® TRUCKSTEIGER  
HANDY**



Maximum load: 200 kg/m<sup>2</sup>

9505906001EN

September 2022

## Table of contents

1.	Introduction .....	3
2.	Components .....	4
3.	Composition .....	8
4.	Assembly .....	11
5.	Use .....	20
6.	Moving .....	21
7.	Maintenance .....	21

## 1. Introduction

The truck scaffold has been conceived for safe working at height on truck cabins. It offers the possibility to work on 2 different height levels (platform height 1.5 m and 2.7m) on the front and rear side of the truck cabin.

The truck scaffolds have been equipped with protective rubbers to avoid scratches and damages on the cabin. The upper platform is extendable

Producer:

Custers Hydraulica B.V.

Smakterweg 33

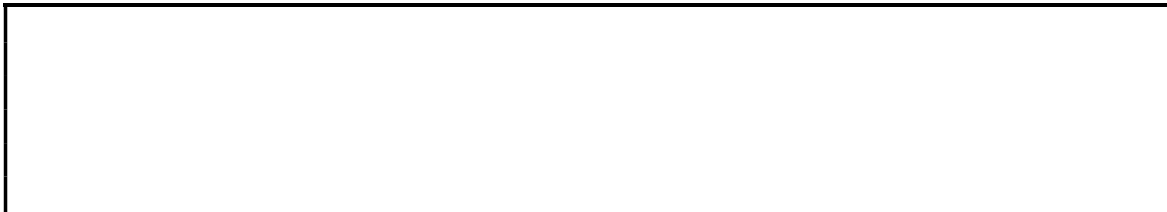
5804 AE Venray, Netherlands

Telephone: +31 (0) 478 553 000

Email: [info@custers.nl](mailto:info@custers.nl)

Website: [www.custers.nl](http://www.custers.nl)

Supplier:



## 2. Components



Nr. 1: Frame left  
9501906025



Nr. 2: Frame right  
9501906026



Nr. 3: Platform 1  
9501906029



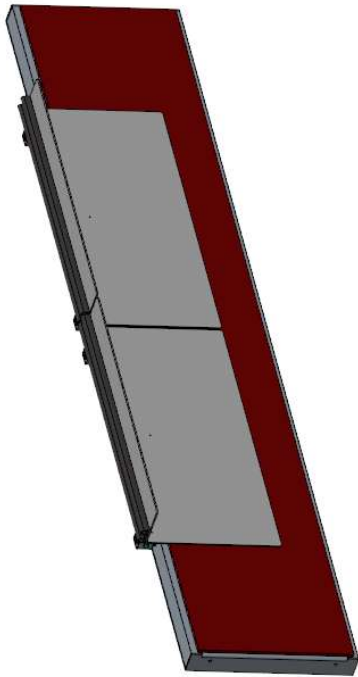
Nr. 4: Middle frame  
9501906005



Nr. 5: Stair  
9501906078



Nr. 6: Handrail frame  
9501906007



Nr. 7: Platform 2  
9501906031



Nr. 8: Center railing  
9501906079



Nr. 9: Handrail left  
9501906081



Nr. 10: Handrail right  
9501906082



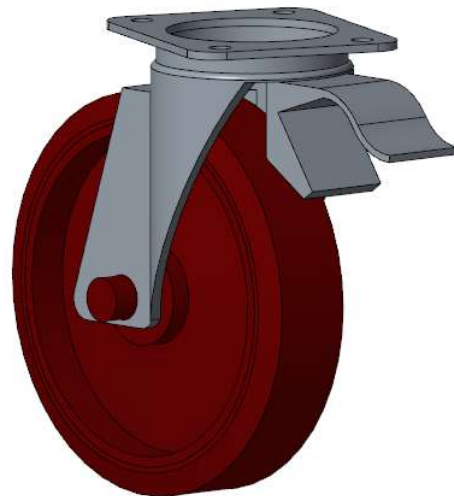
Nr. 11: Horizontal 1952  
9501800045



Nr. 12: Horizontal 2500  
9501200030

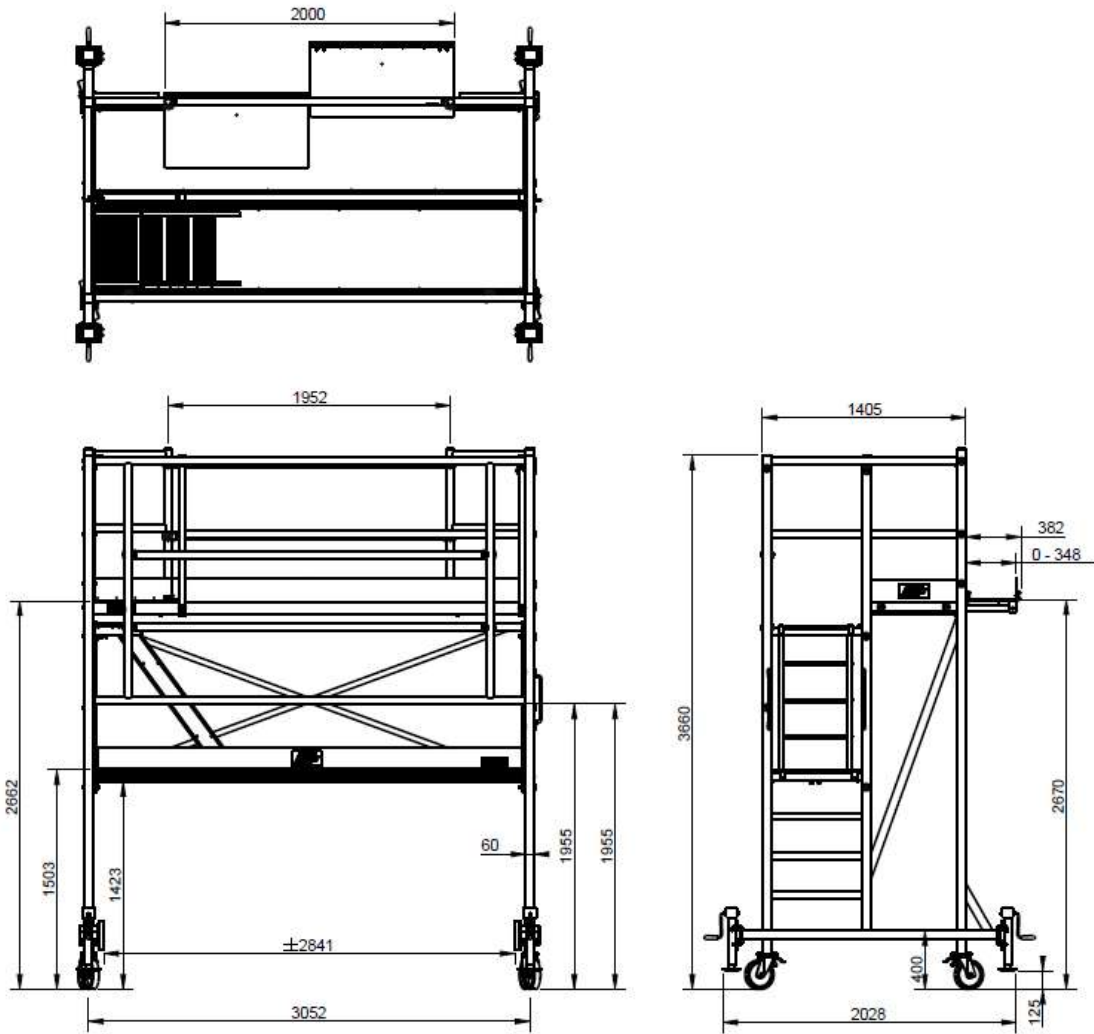


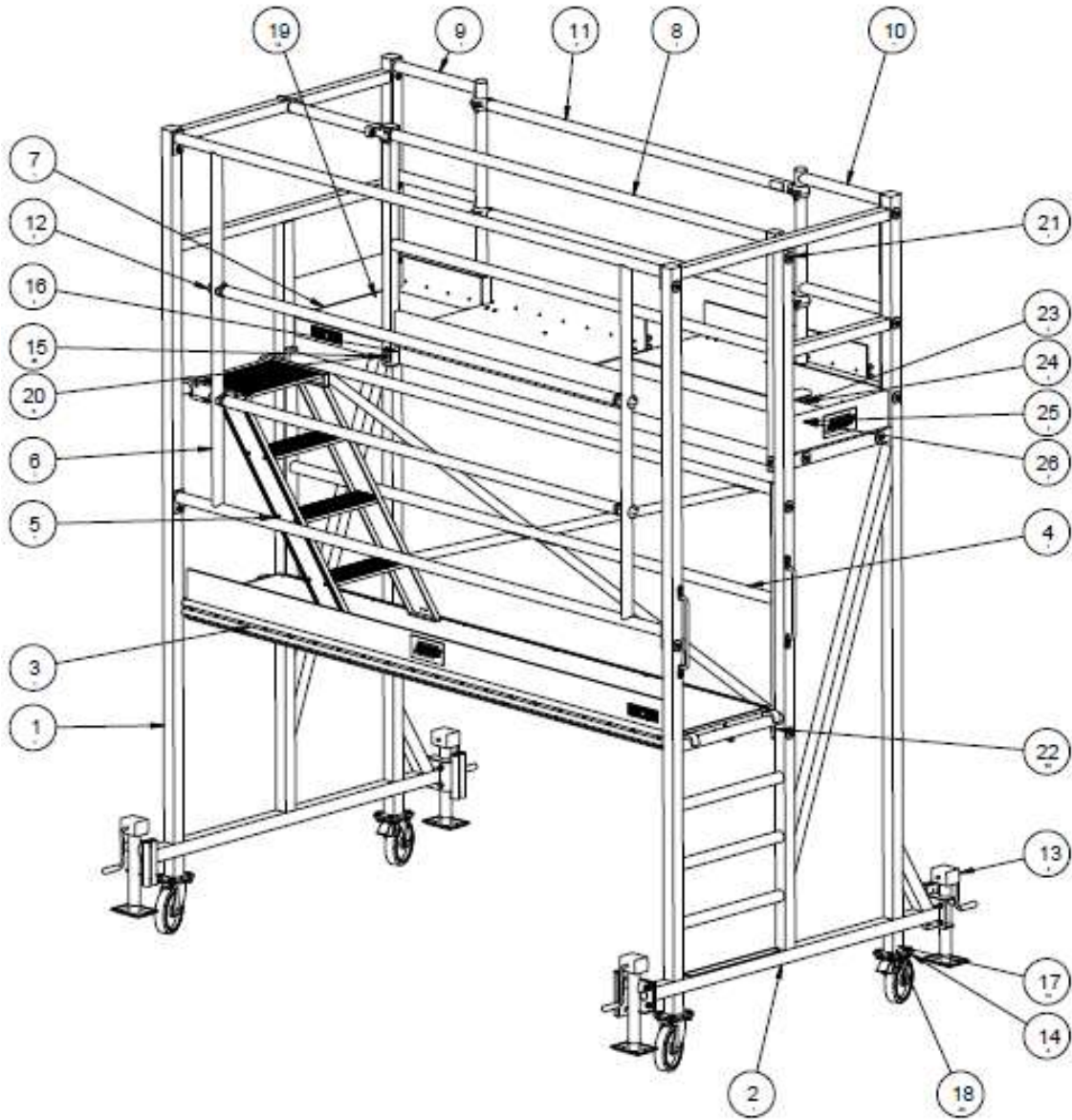
Nr. 13: Parking support  
6306100260



Nr. 14: Swivel wheel  
6418004047

### 3. Composition





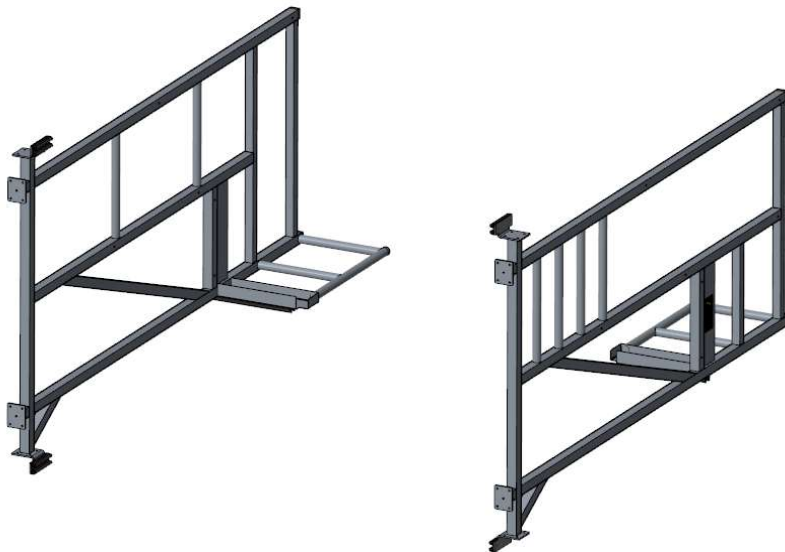
Nr	Number	Name	Article	Gewicht (kg)
1	1	Frame left	9501 906 025	420
2	1	Frame right	9501 906 026	43.4
3	1	Platform 1	9501 906 029	34.5
4	1	Middle frame	9501 906 005	11.5
5	1	Stair	9501 906 078	8.1
6	1	Handrail frame	9501 906 007	8.6
7	1	Platform 2	9501 906 031	51.1
8	1	Center railing	9501 906 079	10.6
9	1	Handrail left	9501 906 081	4.8
10	1	Right handrail	9501 906 082	4.8
11	2	Horizontal 1952	9501 800 045	2.3
12	2	Horizontal 2500	9501 200 030	2.8
13	4	Parking support	6306 100 260	5.2
14	4	Swivelwheel	6418 004 047	3.6
15	20	Fender washer M10x50x3	2211 010 050	-
16	2	Fender washer M10	2213 010 000	-
17	72	Washer M10	2201 010 000	-
18	32	Hex bolt M10 x 30	2064 010 030	-
19	8	Hex bolt M10 x 85	2064 010 085	-
20	6	Hex bolt M10 x 110	2054 010 110	-
21	1	Hex bolt M10 x 130	2054 010 130	-
22	47	Self-locking nut M10	2124 010 000	-
23	2	Washer M8	2201 008 000	-
24	2	Hex bolt M8 x 100	2054 008 100	-
25	2	Fender washer M8	2213 008 000	-
26	2	Self-locking nut M8	2124 008 000	-

## 4. Assembly

Initially, assemble the scaffold and tighten the nuts by hand. Later we tighten the nuts extra so that they are tight.

1. Start by connecting the side frames to the corresponding handrails. Connect frame left (No. 1) to handrail left (No. 9) and frame right (No. 2) to handrail right (No. 10). Use the following mounting materials for this.
  - a. Hex bolt M10x85
  - b. Self-locking nut M10
  - c. Fender washer M10x50x3
  - d. Washer M10

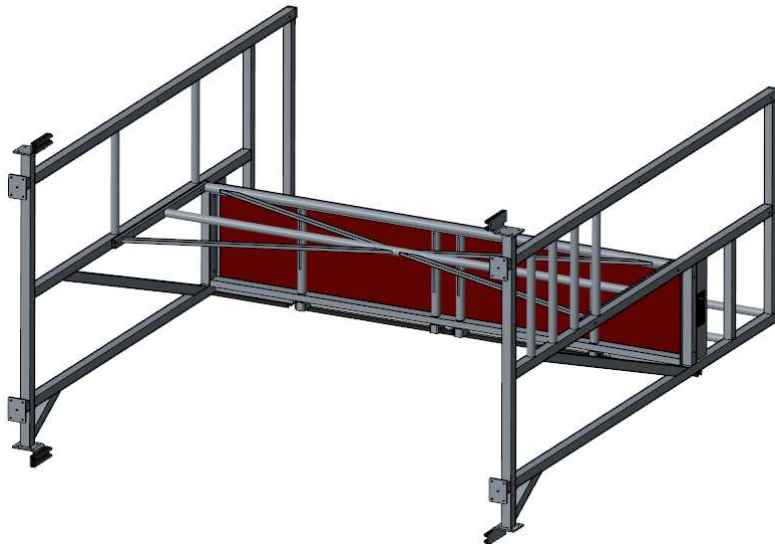
Before continuing, make sure you have both frames as shown in the image below. This is easiest for the next assembly steps.



2. Assemble the platform 2 (nr. 7) between the two frames using.
  - a. Hex bolt M10x85
  - b. Self-locking nut M10
  - c. Fender washer M10x50x3 (outside)
  - d. Washer M10 (Inside)



3. Assemble middle frame (nr.4) between the frames using
  - a. Hex bolt M10x110 (tpv kopse kant platform)
  - b. Self-locking nut M10
  - c. Carrosserie sluitring M10x50x3 (both sides)
  - d. Hex bolt M8x100 (tpv Longitudinal platform)
  - e. Self-locking nut M8
  - f. Washer M8 (top)
  - g. Fender washer M8 (bottom)



4. Assemble the handrail frame (nr. 6) between the two frames using.
  - a. Hex bolt M10x85
  - b. Self-locking nut M10
  - c. Fender washer M10x50x3 (outside)
  - d. Washer M10 (Inside)



5. Assemble the center railing (nr. 8) on the longitudinal member of the platform (nr. 7) Using a bolt M10x85. Use a carrosserie sluitring M10x50x3 on the handrail side and een carrosserie sluitring M10 and a self-locking nut M10 on platform side.



6. Connect the top of the center railing (nr. 8) with frame on the right (nr. 2) m.b.v.
  - a. Hex bolt M10x130
  - b. Self-locking nut M10
  - c. Fender washer M10x50x3 (both sides)



7. Assembly the swivel wheels (nr. 14) at the bottom of the jetty by means of
  - a. Hex bolt M10x30
  - b. Self-locking nut M10
  - c. Washer M10 (both sides)



8. Put the scaffold upright so that it stands on its swivel wheels. Make sure the casters are locked, then tighten all bolts. (avoid flattening the tubes when tightening the bolts).

9. Assembly platform 1 (nr. 3) as shown below. Slide the anti-fan guard under the rung on both sides.



10. Assembly the stairs (no. 5) on the lower platform.



11. Fit the adjustable supports (no. 13) to the truck scaffold using  
a. Hex bolt M10x30  
b. Zelfborgende moer M10  
c. Washer M10 (both sides)



12. Assembly the horizontals (no. 12) on the tabs of the handrail frame (no. 6) above the lower platform.



13. Place the horizontal bars (no. 11) on the ridges of both side frames (no. 1 and 2) above the top platform.



14. The end result is the truck scaffold shown below.



Optional:

a) 9501906109 Guardrail frame



b) 9501906069 Tools plateau



c) 9501906024 Handle (2 required per scaffold)



## 5. Use

- The erection of the scaffold as described in the operations manual must be done by at least two persons.
- The Safe Working Load per platform is 200 kg.
- The surface must be flat and hard enough.
- The area is free of obstacles, both on the ground and above.
- The truck scaffold is only for inside use.
- The truck scaffold may only be used when the 4 wheels are blocked.
- The brakes on the wheels must always be applied except during moving/rolling of the scaffold.
- The horizontals (no. 11 and 12) must always be mounted except for situations where the distance between scaffold and truck is less than 10 cm.
- It is not allowed to jump on platforms.
- The truck scaffold can only be entered by the intended entrance opening.
- Do not put boxes, stairways or other equipment on the platform in order to gain a height.
- The horizontals (guardrails) are not to be used as a step.
- Do not expose the truck scaffold to aggressive liquids or gasses.

## 6. Moving

The truck scaffold is only to be rolled by hand from the ground. Dismantle the support braces and unlock the wheel brakes; the scaffold can now be moved.

During this move you may not exceed the normal walking speed and no persons or materials are allowed on the scaffold during this move.

Be aware of obstacles that could be above or on the ground when you roll the scaffold. You should be very careful when the scaffold is rolled over bad surfaces (inclined planes, insufficient load-carrying capacity, holes etc.) Put the brakes on the wheels when no further moving is needed.

## 7. Maintenance

All parts, particularly the pivoting parts and the welding, must be inspected regularly, at least once every year on wear and tear. Lost or damaged parts must be replaced.

Aluminium scaffolding parts are not allowed to be used in the following cases:

- When round tubes have one or more dull dents with a depth of more than 3,0mm.
- When round tubes have one or more dents directly next to a welding junction, in spite of the dept or shape of the dent.
- When square or rectangular tubes have one or more dull dents with a depth of more than 2,0mm.
- When round or square tubes have one or more sharp dents or cracks (tears), regardless lengths, depth or location of these dent(s) and tears.

Pivoting parts, among others castor wheels, must be clean and run smoothly.

Repair of scaffold-material is only possible in consultation with the manufacturer.



Custers Hydraulica B.V.  
Smakterweg 33  
5804 AE Venray  
Netherlands  
Tel. +31 (0) 47 85 53 000  
E-mail: [info@custers.nl](mailto:info@custers.nl)  
Website: [www.custers.nl](http://www.custers.nl)